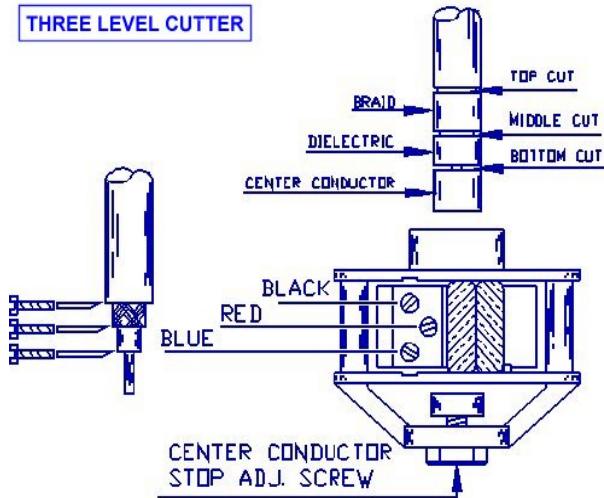


▶ CUTTER HEAD ADJUSTMENT INSTRUCTIONS

THREE LEVEL CUTTER

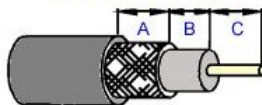


Cutter Head Blade Adjustment Instructions

Blade Depth can be adjusted by turning the colored screws in (clockwise) or out (counter-clockwise).

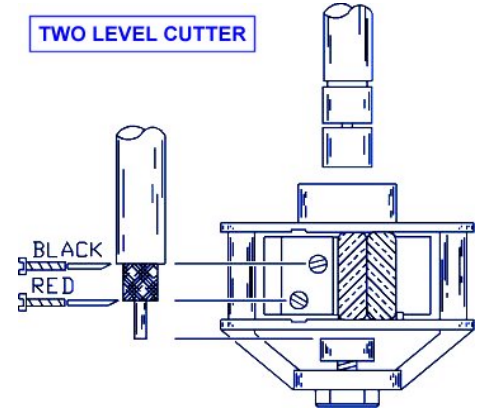
1. Look at the illustrations and determine the proper screw.
2. Turn screw "in" for deeper cut.
3. Back screw "out" for shallower cut.
4. Adjustments should be approx. 1/8 turns between testing.

Three Level Strip



NOTE: Instructions apply to all cutter heads

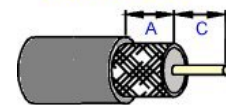
TWO LEVEL CUTTER



Cutter Head Center Conductor Length Adjustment

1. Turn screw "In" for shorter conductor.
2. Back screw "Out" for longer conductor.
3. Maximum adjustment for standard cutter head is +/- .100" (2.5mm). **This adjustment should only be made in special circumstances.** For non-standard center conductor length consult **Coastel Technical Services.**
4. **Do not** over adjust stop screw.
5. **Do not** turn out past molded nut.
6. **Do not** turn all the way in, forcing adjustment screw against center tube.

Two Level Strip



MADE IN U.S.A.



Coastel Cable Tools International Corp.

1211 South Salina Street
Syracuse, New York 13202 USA
1-315-471-5361 FAX 1-315-472-1765



1-800-451-7615

www.CoastelTools.com

▶ TROUBLESHOOTING

PROBLEM: Strip not deep enough.
SOLUTION: 1. Adjust blade depth screws on cutter head clockwise.
2. Increase driver "on" time.

PROBLEM: Strips too deep.
SOLUTION: 1. Adjust blade depth screw on cutter head counter clockwise.
2. Decrease driver "on" time. 3-4 seconds is usually all that is necessary.

PROBLEM: Strips inconsistent.
SOLUTION: 1. Check that the cable is straightened, not curved or bent.
2. Use lubricant on large cables or semi-rigid cables.
3. Check for slugs or debris caught in the cutter head or blade cartridge.

PROBLEM: Cutter head jammed.
SOLUTION: 1. Clean out slugs from cutter head chamber.